

Seek Thermal Guardian G300

All-In-One Thermal Monitoring Solution



Product Overview

Introducing the Seek Guardian Series, led by Seek G300 – the first camera in this lineup. Seek G300 is your all-in-one thermal monitoring solution for early fire detection, condition monitoring, and process control. The G300 lets you detect potential issues before they escalate with real-time temperature monitoring. Conveniently set up and operate the camera through the web browser interface with no additional software or hardware required. Receive instant notifications and alerts when temperature thresholds are exceeded, or unusual patterns are detected.







Whether used as a standalone system or integrated into existing solutions, Seek Guardian Series cameras are the ideal choice for fixed-mount thermal monitoring. Designed and Manufactured in the USA with Global Components. NDAA Compliant.

Key Features

- 320 x 240 Thermal Sensor with SV1: 76,800 temperature pixels with Seek's SV1 Image Optimisation delivers higher detail, better contrast, and more edge clarity.
- Monitor Multiple Areas of Interest: Set up multiple zones and points of interest in a single scene with customisable temperature thresholds, warnings, and alarms.
- Mixed Gain Mode: Observe high and low temperatures simultaneously with low noise and maximum image clarity.
- Web Browser Configurator: Easy set up, configuration, and viewing with no extra software or additional hardware required.
- IP67 Rated For Harsh Environments: Ruggedized M12 PoE connector and durable housing. Compatible with 3rd party enclosures for extreme environments.

Benefits

- Early Fire Detection: Built-in alarm analytics enable swift and accurate fire detection at its earliest stages, enhancing safety measures in various environments.
- 24/7 Condition Monitoring: Identify heat-related problems before they escalate, minimizing downtime and optimizing operational efficiency.
- Customisable Solutions: Use pre-built features through the web configurator or take advantage of RESTful APIs for custom integration with existing systems.
- Safeguard Assets and Improve Safety: Quickly retrieve thermal data to catch potential failures before they occur.
- Monitor Machinery to Detect Failures: Enhance situational awareness and detect faults or fires before signs of flames or smoke.

Camera Highlights	
	320 x 240 Thermal sensor
	-4°F to 1,022°F (-20°C to 550°C) detection range
	Web browser set up, configuration, and viewing
	Power and communication over Ethernet
	On-camera analytics and alarm functionality
	IP67 rating for harsh environments



Part Numbers:
With 4mm Lens: GQ-4ACX
With 9mm Lens: GQ-9ACX

www.frsa.com.au | admin@frsa.com.au | + 61 7 3209 7422

Seek Thermal Guardian G300

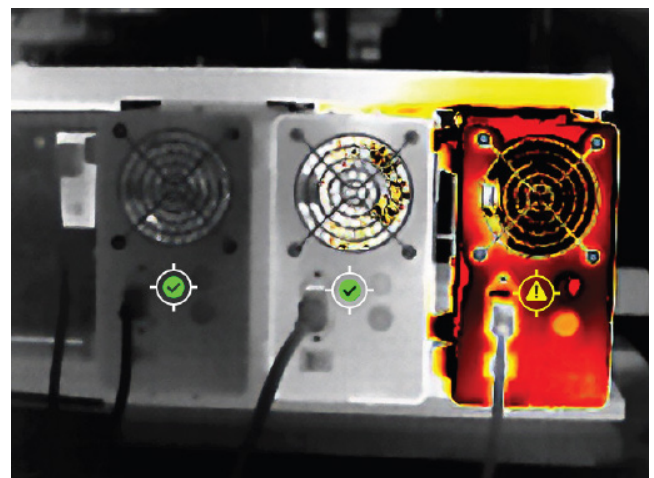
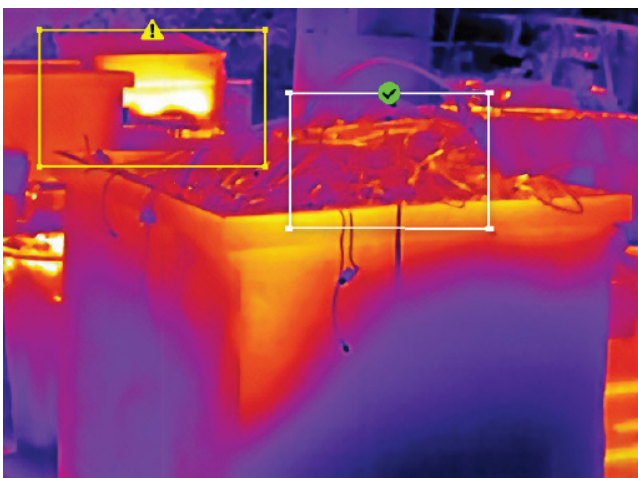
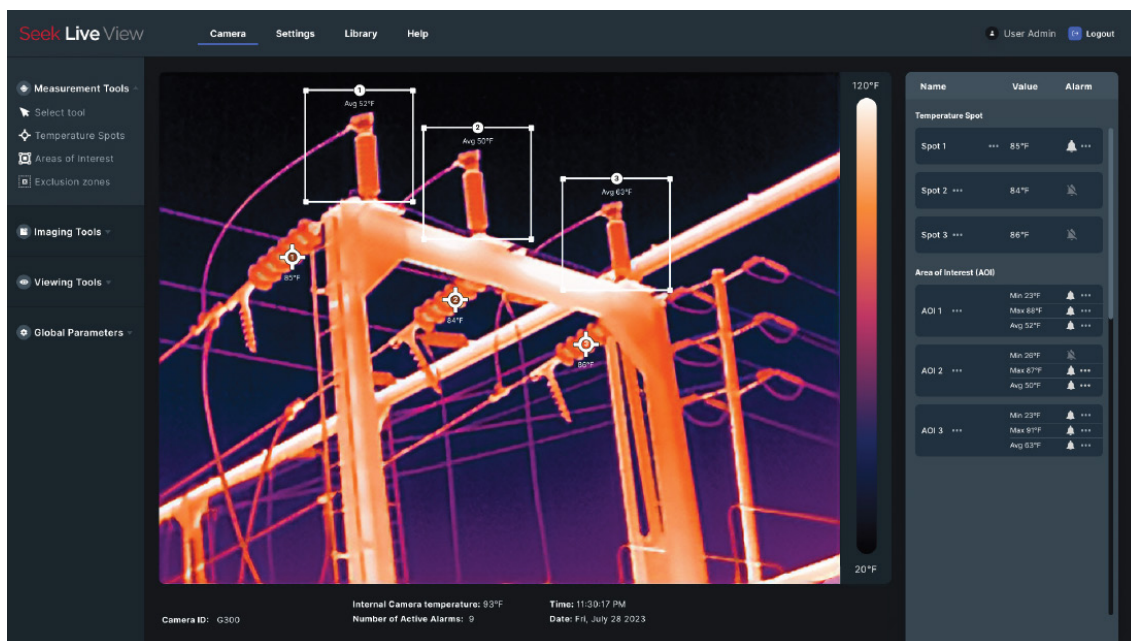
All-In-One Thermal Monitoring Solution



SeekLive View

Included with the G300 is SeekLiveView. It simplifies the control, setup, and monitoring of your G300's operations. The inclusion of historical logs ensures you'll capture and retain all the information you need. Benefit from advanced analysis tools and automated alerts, with key features such as:

- Easy Setup: Get up and running quickly with customizable options, minimizing downtime.
- Smart Control: Set up alarms that work seamlessly with your equipment, giving you better control.
- Custom Inspections: Tailor areas of interest with simple pass/fail settings, allowing you to monitor objects and processes simultaneously.
- Flexible Monitoring: Check temperature data anytime, anywhere – continuously, intermittently, or remotely – to suit your needs.



www.frssa.com.au | admin@frssa.com.au | + 61 7 3209 7422

Seek Thermal Guardian G300

All-In-One Thermal Monitoring Solution



Technical Specifications - G300	
Sensor Resolution	320 x 240
Microbolometer	Uncooled Vanadium Oxide
Pixel Pitch	12 μ m
Spectral Response	7.8 - 14 μ m
Sensor Frame Rate	>25Hz (<9Hz optional)
Object Measurement Range	-4°F to 1022°F (-20°C to 550°C)
Object Imaging Range	-4°F to 1022°F (-20°C to 550°C)
Accuracy	\pm 5°C or 5% between 5°C to 550°C @ 25°C ambient
Sensor Sensitivity	35 mK @ 25°C w/ SV1 Image Optimization
Power	Power Over Ethernet, PoE IEEE 802.3af class 0
Connector Type	M12 X-coded

Optics		
Focal Length	3.7 mm	9.1 mm
Spatial Resolution (IFOV, center)	3.20	1.32
Field of View (H x V)	61° x 45°	24° x 18°
Focus	Fixed	
Lens Protective Window Material	Silicon	

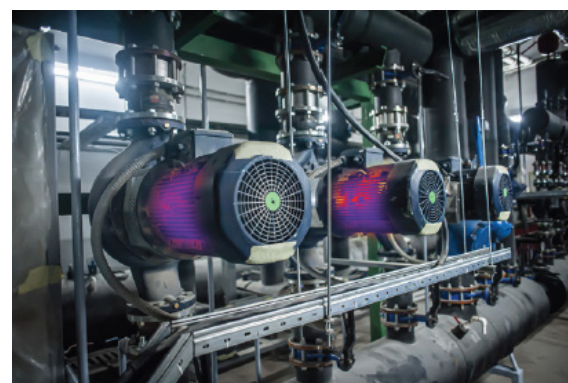
Measurement Analysis	
Temperature Spots	x10 spots
Areas of Interest (AOI)	x5 AOIs (min/max/average)
Exclusion Zones	Blank out/ignore pixels

Interfaces	
Configuration	Web interface, browser based
Ethernet Protocols	DHCP, HTTP(S), IEEE 1588, RESTful API
Image Streaming Protocol	RTSP

Physical Data	
Camera Size (L x W x H)	105 mm x 50 mm x 50 mm (incl. connector)
Mounting (base)	4x M3 mounting 1x 1/4-20" UNC

Environmental	
Encapsulation	IP 67
Operating Temperature Range	- 10°C to 60°C (14°F to 140°F)
Storage Temperature Range	- 40°C to 80°C (-40°F to 176°F)

Alarms	
Alarm functions	Above/Below threshold based on any selected measurement function
Alarm output	RESTful API E-Mail Save Image Save Video Save Alarm Log



Specifications and undocumented specifications are subject to change without notice.

www.frsa.com.au | admin@frsa.com.au | + 61 7 3209 7422

