

Product Overview

Designed with firefighters for firefighters, the NFPA Certified AttackPRO+ thermal imaging camera offers an unmatched combination of image quality and durability. With its high resolution and wide field of view, AttackPRO+ is the new decision-making weapon of choice for captains and commanding officers. Mixed-gain pixel technology eliminates the visual confusion and delay of switching between highgain and low-gain modes. AttackPRO+ lets you clearly see the fire and the crew, all in one detailed image. The kit includes the AttackPRO+ camera, 2 batteries, and a charging dock. Designed and Manufactured in the USA with Global Components. Thermal sensor designed and manufactured by Seek in Santa Barbara, CA USA.

Key Features

- Mixed Gain with SV1 Image Optimisation: See the hottest and coolest regions of the scene simultaneously without freezing or switching gain modes; details enhanced with SV1
- Survey Mode: Survey Mode is optimised for lower temperature scenes to help identify hot spots and hidden threats during size-up and overhaul.
- Durable, Waterproof Design: Durable and reliable design built with IP67 rating and 2 meter drop resistance
- Wide, 57-Degree Field of View: Easily scan a large area to identify hazards or victims in seconds
- Long-Lasting Rechargeable Battery: Greater than 6 hours of continuous thermal imaging

Benefits

- Decision Making on Command: Direct Firefighters, water, and resources with expedited tactical precision
- Robust Decision Making TIC: Equip every commanding officer with the first affordable decision making TIC
- 300 Lumen Integrated Flashlight: LED flashlight available at the touch of a button
- Search and Rescue: Find victims and self-rescue faster with a reliable personal TIC
- Execute 360 Size-ups & Overhaul Faster: When seconds count, a Seek decision-making TIC saves time and lives

Key Camera Specs	
Resolution	320 x 240
Field of Vlew	57° x 42°
Durability	IP67 waterproof, 2 meter drop
Detection	-4°F to 1022°F (-20°C to 550°C)
Imaging	Mixed Gain with SV1
Flashlight	300 Lumen LED



Seek Thermal

AttackPRO+ NPFA

Decision Making TIC for Firefighting | NFPA Certified



Specifications	
Thermal Sensor	320 x 240 (76,800 pixels)
Detection Distance	12 inches to 1,000 feet
Field of View	57° HFOV, 42° VFOV
Temperature Range	-4 to 1,022°F (-20 to 550°C)
Operating Temp	-4 to 131°F (-20 to 55°C) - no time limit up to 302°F (150°C) - max 15 min up to 500°F (260°C) - max 5 min
Frame Rate	> 25 Hz Fast Frame
IP Rating	IP67 Waterproof
Flashlight	300 Lumen LED
Display	3.5" Color with Corning® Gorilla® Glass
Thermal Sensitivity	< 35 mK with SV1
User Interface	On device 2 tactile button operation
Temp. Display Scale	Fahrenheit or Celsius
Image modes	FIRE (TI Basic & TI Basic+) and SURVEY
Storage Media	NA
Battery	>6 Hours Thermal Imaging (w/o flashlight); >3hrs (with thermal AND flashlight)



Seek AttackPRO+ NPFA combines powerful thermal insight and a bright LED flashlight in an intuitive, two button interface.

Modes



TI BASIC
Maintain your situational awareness with a simple and decluttered display showing greyscale and colorised regions

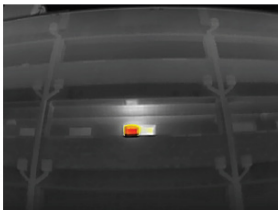


TI BASIC+
Enhance your tactics with a spot temp readout while still maintaining greyscale and colorised regions



SURVEY MODE
Investigative mode with early colorisation at 65C (150F) ideal for size up, smells & bells, and overhaul

Thermal Applications



360 Size Up



Fire Attack



Overhaul

www.frsa.com.au | admin@frsa.com.au | + 61 7 3209 7422

